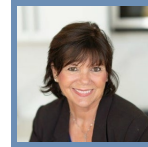


THE ELLIOT-SLAB ON GRADE FLOORPLAN

9962 Ambrose Alcove



QUESTIONS?
651-289-6800

Available Now



Step into the Elliot-Slab on Grade

Welcome home to our newest villa floor plan, The Elliot! Like all Creative Homes, this floor plan provides tons of glass windows and natural light, a wonderful open concept, and stunning design details. As you make your way inside, you'll see the gorgeous kitchen, great room, and dinette come together with beautiful natural light. The owner's suite is located off the great room with an awesome bathroom and walk-in closet. The laundry is also on the main level of this home connected to the spacious mud room. This is ...

ADDRESS

9962 Ambrose Alcove
Woodbury , MN 55129

PRICE

\$444,900

COMMUNITY

Glen View Farm

FLOORPLAN

Elliot-Slab on Grade

PLAN DETAILS

2 Bedroom

2 Car Garage

1,465 Sq.Ft.

2 Baths

1 Stories

All prices, promotions, features, options, amenities, floor plans, elevations, materials and dimensions are subject to change without notice. All information is deemed reliable but not guaranteed. Promotion dollars will be applied toward design studio. Promotion varies by community. Talk to new home specialist in the community to learn details. Not to be used toward base price of home, seller's credit, closing cost, and lot premium. Offer valid on purchase agreements signed on new builds executed between the dates of December 4, 2020 and December 31, 2020. Call the Online Sales Counselor at 651-333-4181 for more details or visit a New Home Specialist for further details and important legal disclaimers. Void where prohibited by law. Offers, incentives, and seller contributions are subject to certain terms, conditions, and restrictions. Creative Homes reserves the right to change or withdraw any offer at any time and without notice. Offer may not be redeemed for cash or equivalent. Prices, home-site, and plan availability are subject to change or revocation without prior notice or obligation. Copyright © 2024 Creative Homes. Creative Homes, the Creative Homes logo are US registered service marks or service marks of Creative Homes.