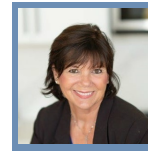
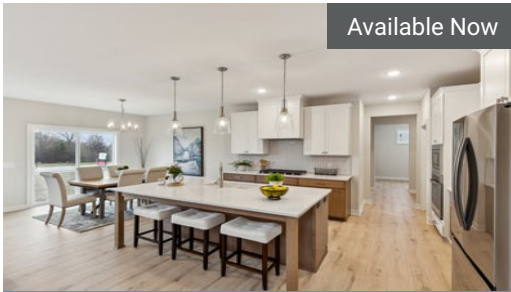


SEE OUR

Available Homes



QUESTIONS?
651-289-6800



Available Now

EVANSWOOD

10103 Shadyview Ln
Maple Grove, MN

\$869,900

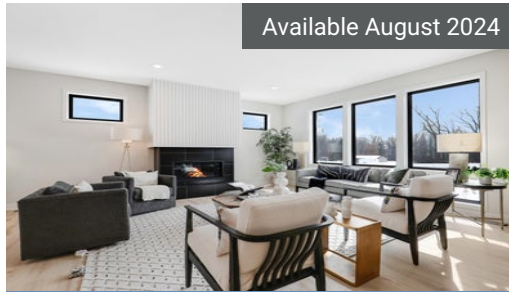
The **Gibson** Floorplan

5

3.5

3

4,561



Available August 2024

EVANSWOOD

10145 Shadyview Ln N
Maple Grove, MN

The **Middleton** Floorplan

5

4.5

3

4,749



Available July 2024

EVANSWOOD

10151 Shadyview Ln
Maple Grove, MN

\$799,900

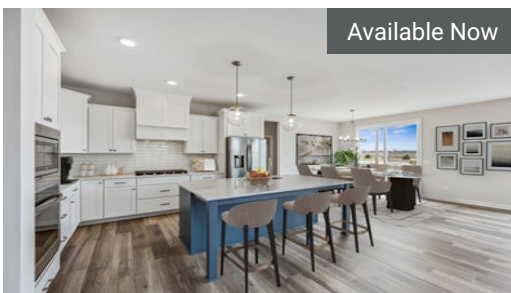
The **Sutherland** Floorplan

4

3.5

3

3,582



Available Now

BRIARCROFT

10154 Arrowwood Trl
Woodbury, MN

\$714,900

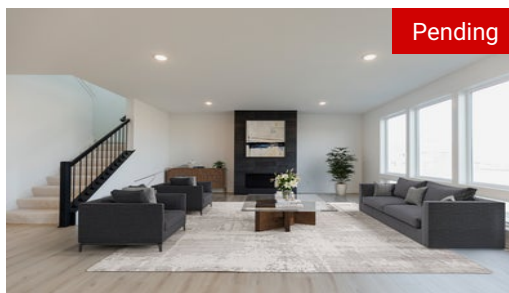
The **Sutherland** Floorplan

4

4.5

3

3,513



Pending

EVANSWOOD

10156 Queensland Ln
Maple Grove, MN

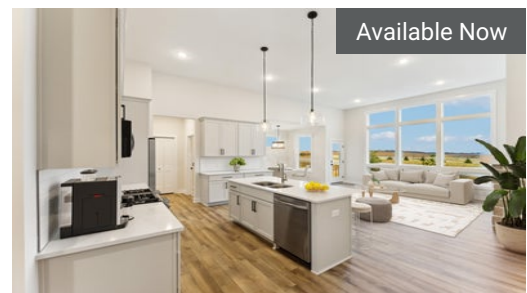
The **Sutherland** Floorplan

4

3.5

3

3,582



Available Now

BRIARCROFT

10166 Arrowwood Trl
Woodbury, MN

\$599,900

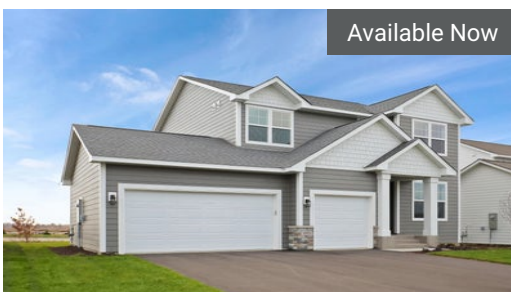
The **Elliot** Floorplan

3

3.0

3

2,652



Available Now

BRIARCROFT

10172 Arrowwood Trl
Woodbury, MN

\$649,900

The **Kendall** Floorplan

5

4.5

3

3,328



Available Now

BRIARCROFT

10173 Arrowwood Trl
Woodbury, MN

\$689,900

The **Sutherland** Floorplan

5

4.5

3

3,326



Available Now

BRIARCROFT

10178 Arrowwood Trl
Woodbury, MN

\$629,900

The **Alder** Floorplan

4

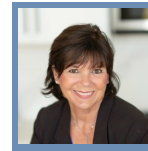
3.5

3

2,732

SEE OUR

Available Homes



QUESTIONS?
651-289-6800



Pending

BRIARCROFT

10179 Arrowwood Trl
Woodbury, MN

The **Riley** Floorplan

			
4	3.0	3	2,738



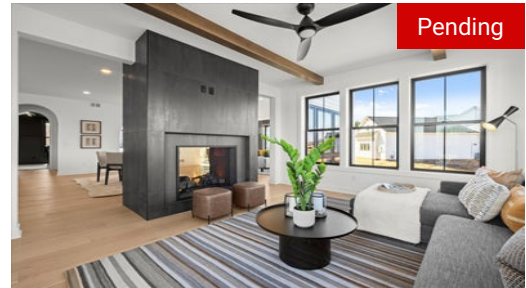
Available August 2024

BRIARCROFT

10280 Arrowwood Trl
Woodbury, MN

The **Aspen** Floorplan

			
4	3.5	3	2,977



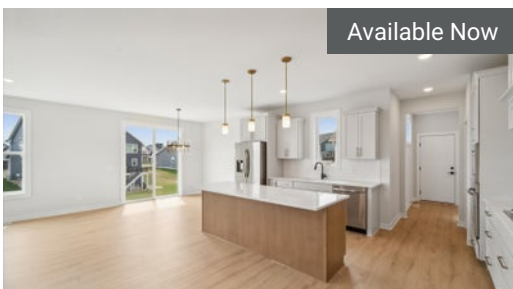
Pending

HIDDEN MEADOWS

10466 56th Pl
Lake Elmo, MN

The **Custom** Floorplan

			
5	4.5	4	5,363



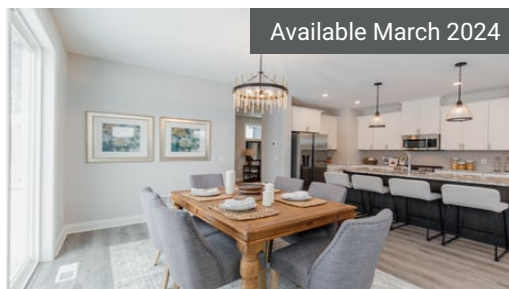
Available Now

LEGACY AT NORTHSTAR

10707 40th St
Lake Elmo, MN \$779,900

The **Gibson** Floorplan

			
5	3.5	3	3,895



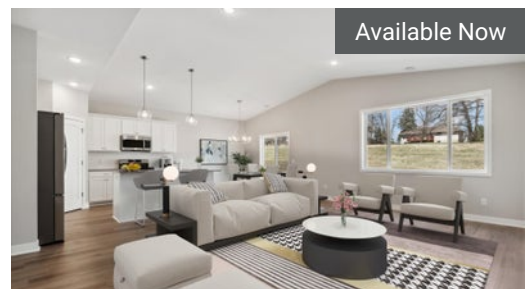
Available March 2024

LEGACY AT NORTHSTAR

10843 40th St
Lake Elmo, MN \$679,900

The **Aspen** Floorplan

			
4	3.5	3	3,029



Available Now

OAK HILL

1131 Compton Ave
River Falls, WI \$414,900

The **Arlow** Floorplan

			
4	2.5	3	1,535



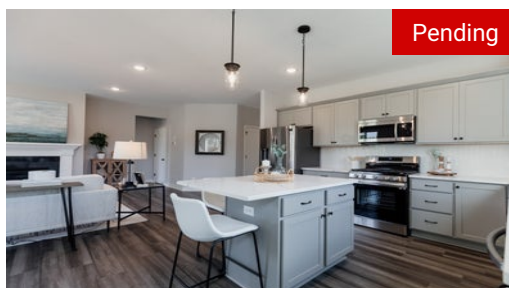
Available Now

OAK HILL

1143 Compton Ave
River Falls, WI \$429,900

The **Henry** Floorplan

			
4	2.5	3	2,024



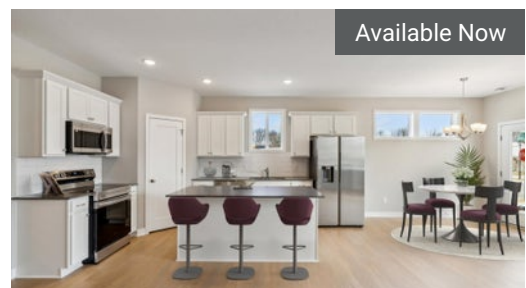
Pending

OAK HILL

1155 Compton Ave
River Falls, WI

The **Hudson** Floorplan

			
3	3.0	2	1,612



Available Now

OAK HILL

120 Gambel St
River Falls, WI \$369,900

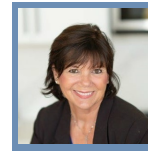
The **Bellwood** Floorplan

			
2	2.0	2	1,368

All prices, promotions, features, options, amenities, floor plans, elevations, materials and dimensions are subject to change without notice. All information is deemed reliable but not guaranteed. Promotion dollars will be applied toward design studio. Promotion varies by community. Talk to new home specialist in the community to learn details. Not to be used toward base price of home, seller's credit, closing cost, and lot premium. Offer valid on purchase agreements signed on new builds executed between the dates of December 4, 2020 and December 31, 2020. Call the Online Sales Counselor at 651-333-4181 for more details or visit a New Home Specialist for further details and important legal disclaimers. Void where prohibited by law. Offers, incentives, and seller contributions are subject to certain terms, conditions, and restrictions. Creative Homes reserves the right to change or withdraw any offer at any time and without notice. Offer may not be redeemed for cash or equivalent. Prices, home-site, and plan availability are subject to change or revocation without prior notice or obligation. Copyright © 2024 Creative Homes. Creative Homes, the Creative Homes logo are US registered service marks or service marks of Creative Homes.

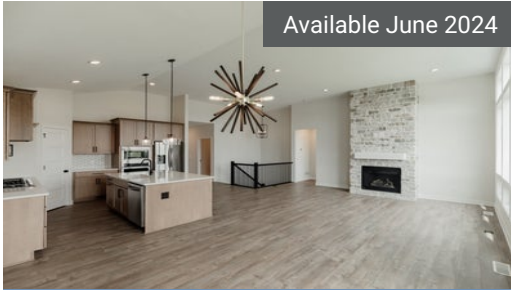
SEE OUR

Available Homes



QUESTIONS?
651-289-6800

Available June 2024



LEGACY AT MIDLAND HILLS

1234 Laurie Ct
Roseville, MN

\$719,900



Available June 2024



LEGACY AT MIDLAND HILLS

1234 N Eustis St
Roseville, MN

\$990,900



Available July 2024



OAKWOOD PONDS

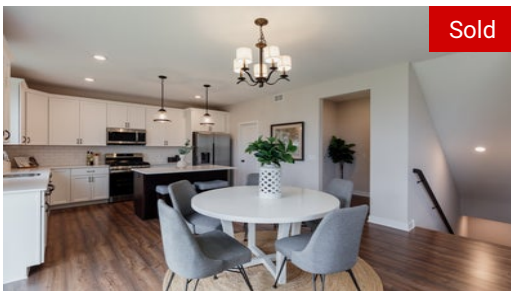
12775 Stutz Ct
Blaine, MN

\$679,900

The Sutherland Floorplan



Sold



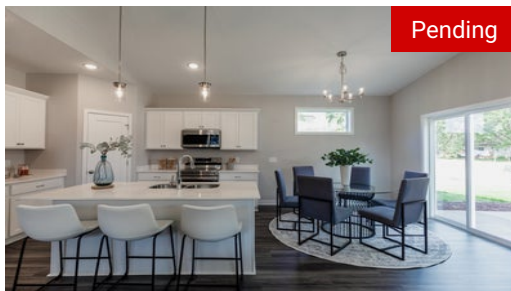
OAKWOOD PONDS

12785 Stutz Ct NE
Blaine, MN

The Alder Floorplan



Pending



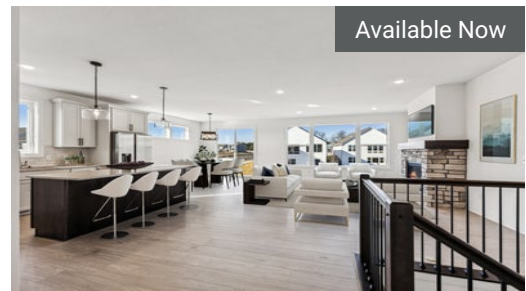
MEADOW CROSSING

1305 Violet St
New Richmond, WI

The Arlow Floorplan



Available Now



LEXINGTON WATERS

13106 Hupp Ct NE
Blaine, MN

\$599,900

The Riley Floorplan



Available Now



LEXINGTON WATERS

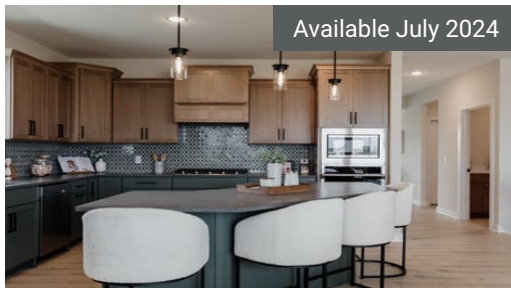
13112 Ghia Ct NE
Blaine, MN

\$569,900

The Victoria Floorplan



Available July 2024



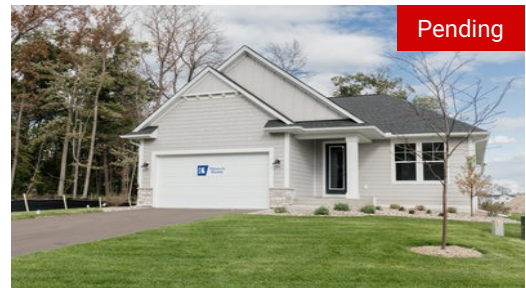
LEXINGTON WATERS

13116 Hupp Ct NE
Blaine, MN

The Riley Floorplan



Pending



LEXINGTON WATERS

13121 Ghia Ct NE
Blaine, MN

The Victoria Floorplan



All prices, promotions, features, options, amenities, floor plans, elevations, materials and dimensions are subject to change without notice. All information is deemed reliable but not guaranteed. Promotion dollars will be applied toward design studio. Promotion varies by community. Talk to new home specialist in the community to learn details. Not to be used toward base price of home, seller's credit, closing cost, and lot premium. Offer valid on purchase agreements signed on new builds executed between the dates of December 4, 2020 and December 31, 2020. Call the Online Sales Counselor at 651-333-4181 for more details or visit a New Home Specialist for further details and important legal disclaimers. Void where prohibited by law. Offers, incentives, and seller contributions are subject to certain terms, conditions, and restrictions. Creative Homes reserves the right to change or withdraw any offer at any time and without notice. Offer may not be redeemed for cash or equivalent. Prices, home-site, and plan availability are subject to change or revocation without prior notice or obligation. Copyright © 2024 Creative Homes. Creative Homes, the Creative Homes logo are US registered service marks or service marks of Creative Homes.

SEE OUR

Available Homes



ADELAIDE LANDING

13489 Fondant Trl
Hugo, MN

The **Sutherland** Floorplan

			
5	3.5	3	3,538



OAK HILL

134 Gambel St
River Falls, WI

\$349,900

The **Bellwood** Floorplan

			
2	2.0	2	1,368

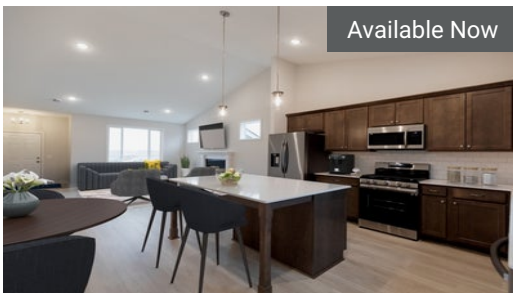


ADELAIDE LANDING

13511 Fondant Trl
Hugo, MN

The **Aspen** Floorplan

			
4	3.5	3	3,054



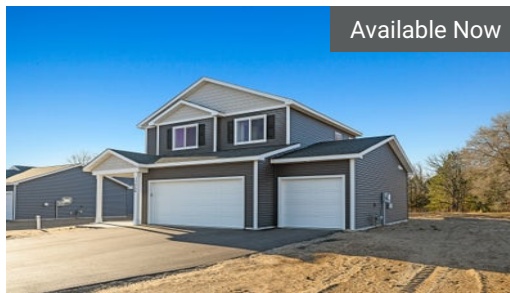
TROTT BROOK CROSSING

17052 Uranimite St NW
Ramsey, MN

\$379,900

The **Arden** Floorplan

			
3	2.0	3	1,305



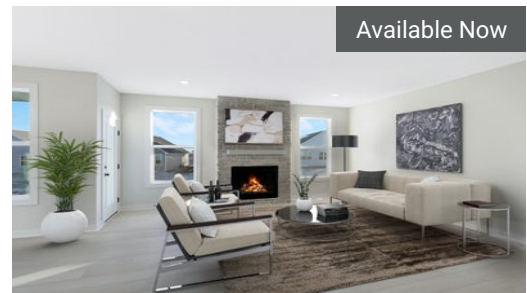
TROTT BROOK CROSSING

17058 Uranimite St NW
Ramsey, MN

\$414,900

The **Arlow** Floorplan

			
3	2.5	3	1,535



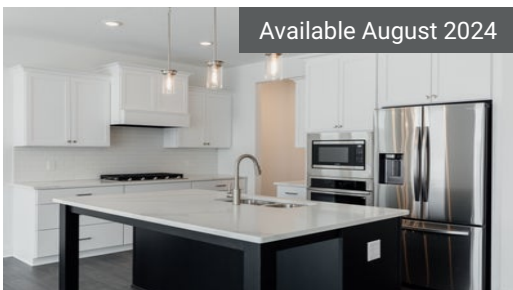
HERITAGE RIDGE VILLAS

1833 Ridgepointe Ct
Hastings, MN

\$489,900

The **Elliot** Floorplan

			
3	3.0	2	2,699



HERITAGE RIDGE

1799 Fallbrooke Dr
Hastings, MN

The **Riley** Floorplan

			
4	3.0	3	3,302



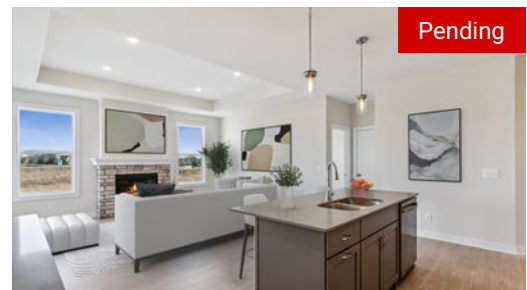
HERITAGE RIDGE

1987 Fallbrooke Dr
Hastings, MN

\$569,900

The **Alder** Floorplan

			
4	3.5	3	2,738



HERITAGE RIDGE VILLAS

2083 Ridgepointe Dr
Hastings, MN

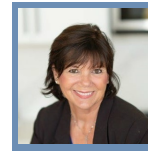
The **Elliot** Floorplan

			
3	3.0	2	2,720

All prices, promotions, features, options, amenities, floor plans, elevations, materials and dimensions are subject to change without notice. All information is deemed reliable but not guaranteed. Promotion dollars will be applied toward design studio. Promotion varies by community. Talk to new home specialist in the community to learn details. Not to be used toward base price of home, seller's credit, closing cost, and lot premium. Offer valid on purchase agreements signed on new builds executed between the dates of December 4, 2020 and December 31, 2020. Call the Online Sales Counselor at 651-333-4181 for more details or visit a New Home Specialist for further details and important legal disclaimers. Void where prohibited by law. Offers, incentives, and seller contributions are subject to certain terms, conditions, and restrictions. Creative Homes reserves the right to change or withdraw any offer at any time and without notice. Offer may not be redeemed for cash or equivalent. Prices, home-site, and plan availability are subject to change or revocation without prior notice or obligation. Copyright © 2024 Creative Homes. Creative Homes, the Creative Homes logo are US registered service marks or service marks of Creative Homes.

SEE OUR

Available Homes



QUESTIONS?
651-289-6800



Pending

HERITAGE RIDGE

2120 Westpointe Drive
Hastings, MN

The **Hudson** Floorplan

3

2.0

3

1,612



Available May 2024

HERITAGE RIDGE

2132 Westpointe Dr
Hastings, MN

\$474,900

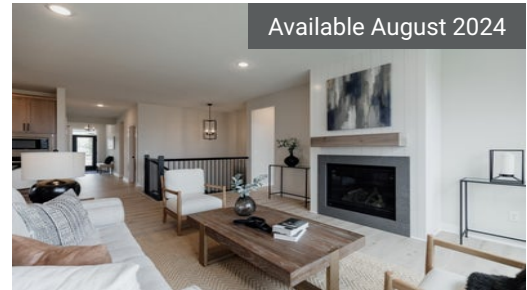
The **Arlow** Floorplan

3

2.5

3

1,535



Available August 2024

HERITAGE RIDGE VILLAS

2133 Westpointe Dr
Hastings, MN

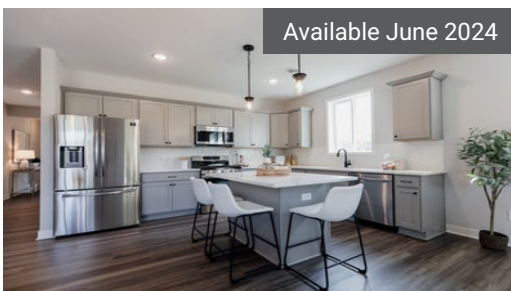
The **Riley** Floorplan

2

3.0

2

2,738



Available June 2024

HERITAGE RIDGE VILLAS

2149 Westpointe Dr
Hastings, MN

\$419,900

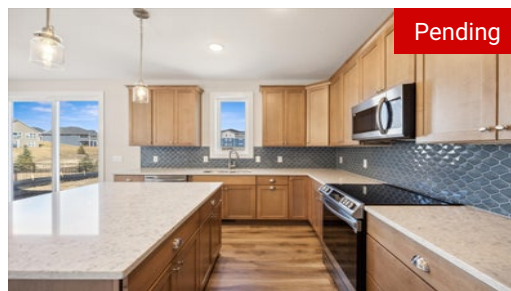
The **Hudson** Floorplan

3

2.0

2

1,612



Pending

BELLA ROSE

2555 Sofia Ln
Hudson, WI

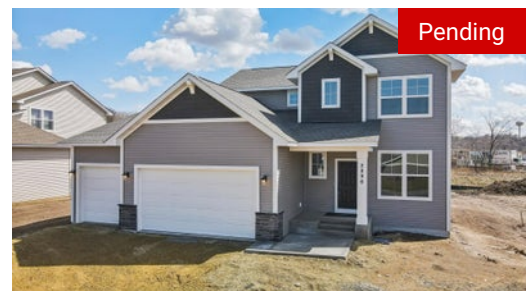
The **Alder** Floorplan

4

3.5

3

2,714



Pending

STERLING PONDS

2896 Coventry Cir
River Falls, WI

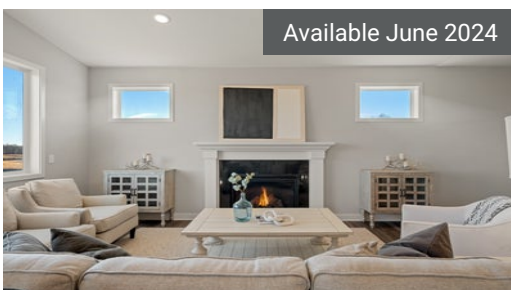
The **Alder** Floorplan

4

4.5

3

2,714



Available June 2024

STERLING PONDS

2926 Elgin Ct
River Falls, WI

\$549,900

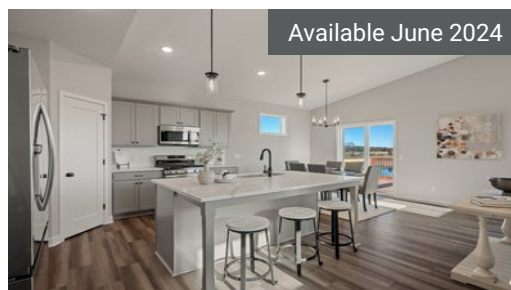
The **Sully** Floorplan

4

2.5

2

2,596



Available June 2024

STERLING PONDS

3058 Kettering Rd
River Falls, WI

\$499,900

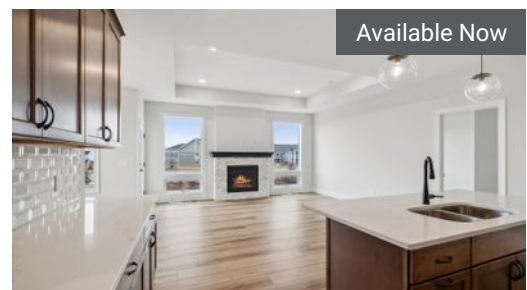
The **Alley** Floorplan

3

3.0

3

2,044



Available Now

LEGACY AT NORTHSTAR VILLAS

3973 Kokanee Ln
Lake Elmo, MN

\$619,900

The **Elliot** Floorplan

3

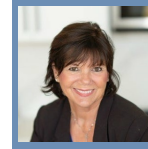
3.0

2

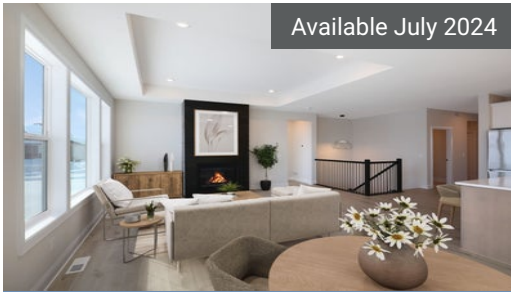
2,642

SEE OUR

Available Homes



QUESTIONS?
651-289-6800



Available July 2024

LEGACY AT NORTHSTAR VILLAS

3981 Kokanee Ln
Lake Elmo, MN

\$649,900

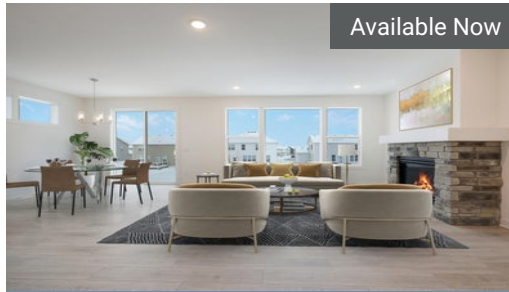
The Riley Floorplan

4

3.0

2

2,782



Available Now

GLEN VIEW FARM

4377 Monarch Dr
Woodbury, MN

\$589,900

The Riley-Villa Floorplan

4

3.0

2

2,764



Available Now

GLEN VIEW FARM

4385 Monarch Dr
Woodbury, MN

\$559,900

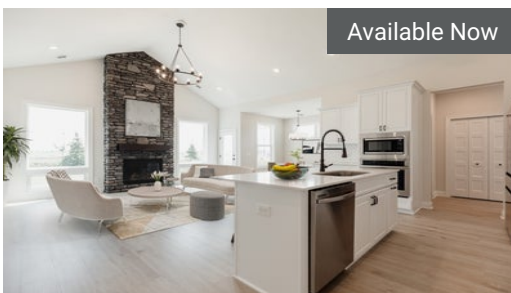
The Elliot-Villa Floorplan

3

3.0

2

2,699



Available Now

GLEN VIEW FARM

4418 Monarch Dr
Woodbury, MN

\$450,000

The Elliot-Slab on Grade Floorplan

2

2.0

2

1,413



Sold

GLEN VIEW FARM

4426 Monarch Dr
Woodbury, MN

The Riley-Slab on Grade Floorplan

3

2.0

2

1,751



Available August 2024

GLEN VIEW FARM

4474 Monarch Dr
Woodbury, MN

The Riley-Slab on Grade Floorplan

3

2.0

2

1,839



Pending

OAKWOOD PONDS

4640 128th Cir NE
Blaine, MN

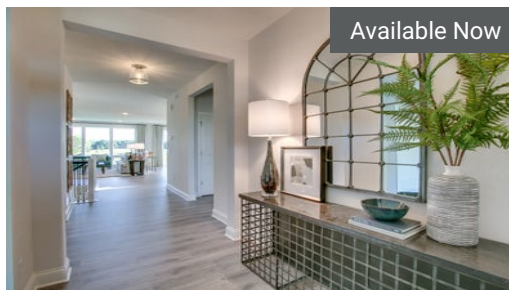
The Middleton Floorplan

5

3.5

3

4,271



Available Now

OAKWOOD PONDS VILLAS

4706 127th Ln NE
Blaine, MN

\$639,900

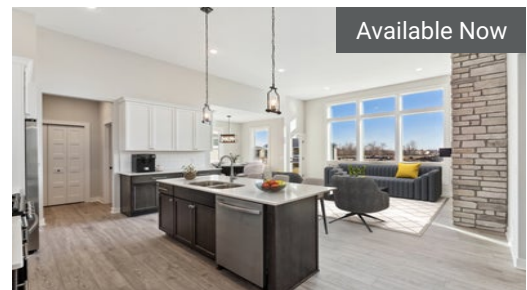
The Victoria Floorplan

3

3.0

3

2,681



Available Now

OAKWOOD PONDS VILLAS

4809 127th Cir NE
Blaine, MN

\$539,900

The Elliot Floorplan

3

3.0

2

2,720


All prices, promotions, features, options, amenities, floor plans, elevations, materials and dimensions are subject to change without notice. All information is deemed reliable but not guaranteed. Promotion dollars will be applied toward design studio. Promotion varies by community. Talk to new home specialist in the community to learn details. Not to be used toward base price of home, seller's credit, closing cost, and lot premium. Offer valid on purchase agreements signed on new builds executed between the dates of December 4, 2020 and December 31, 2020. Call the Online Sales Counselor at 651-333-4181 for more details or visit a New Home Specialist for further details and important legal disclaimers. Void where prohibited by law. Offers, incentives, and seller contributions are subject to certain terms, conditions, and restrictions. Creative Homes reserves the right to change or withdraw any offer at any time and without notice. Offer may not be redeemed for cash or equivalent. Prices, home-site, and plan availability are subject to change or revocation without prior notice or obligation. Copyright © 2024 Creative Homes. Creative Homes, the Creative Homes logo are US registered service marks or service marks of Creative Homes.

SEE OUR

Available Homes



Available July 2024




TROTT BROOK CROSSING

7453 171st St
Ramsey, MN

The **Hudson** Floorplan

3	2.0	4	1,612
---	-----	---	-------

Available July 2024



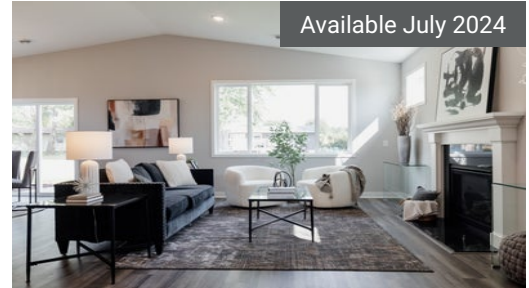
TROTT BROOK CROSSING

7504 170th St
Ramsey, MN

The **Henry** Floorplan

4	2.5	2	1,864
---	-----	---	-------

Available July 2024



TROTT BROOK CROSSING

7516 170th St
Ramsey, MN

The **Arlow** Floorplan

4	3.5	3	2,260
---	-----	---	-------

Available Now



GLEN VIEW FARM

9962 Ambrose Alcove
Woodbury, MN

\$449,900

The **Elliot-Slab on Grade** Floorplan

2	2.0	2	1,465
---	-----	---	-------