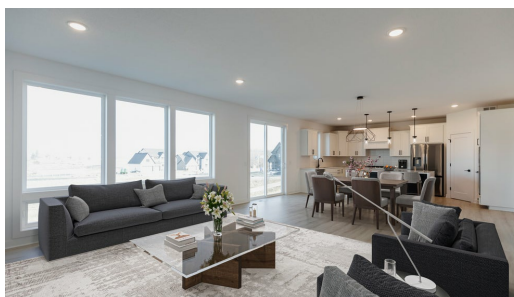


Pending



Step into the Sutherland

A stunning open concept home with tons of personalization options to truly make your own! The kitchen, dining, and living space come together with tons of glass and natural light. Upstairs you'll find the laundry room, loft, and three bedrooms. Downstairs includes a spacious family room and another bed and bathroom.

📍 ADDRESS

10156 Queensland Ln
 Maple Grove , MN
 55311

🏘️ COMMUNITY

Evanswood

🏠 FLOORPLAN

Sutherland

📋 PLAN DETAILS

🛏️ 4 Bedroom

🚗 3 Car Garage

📏 3,582 Sq.Ft.

🚿 3 Baths | 1 Half Bath

🏠 2 Stories